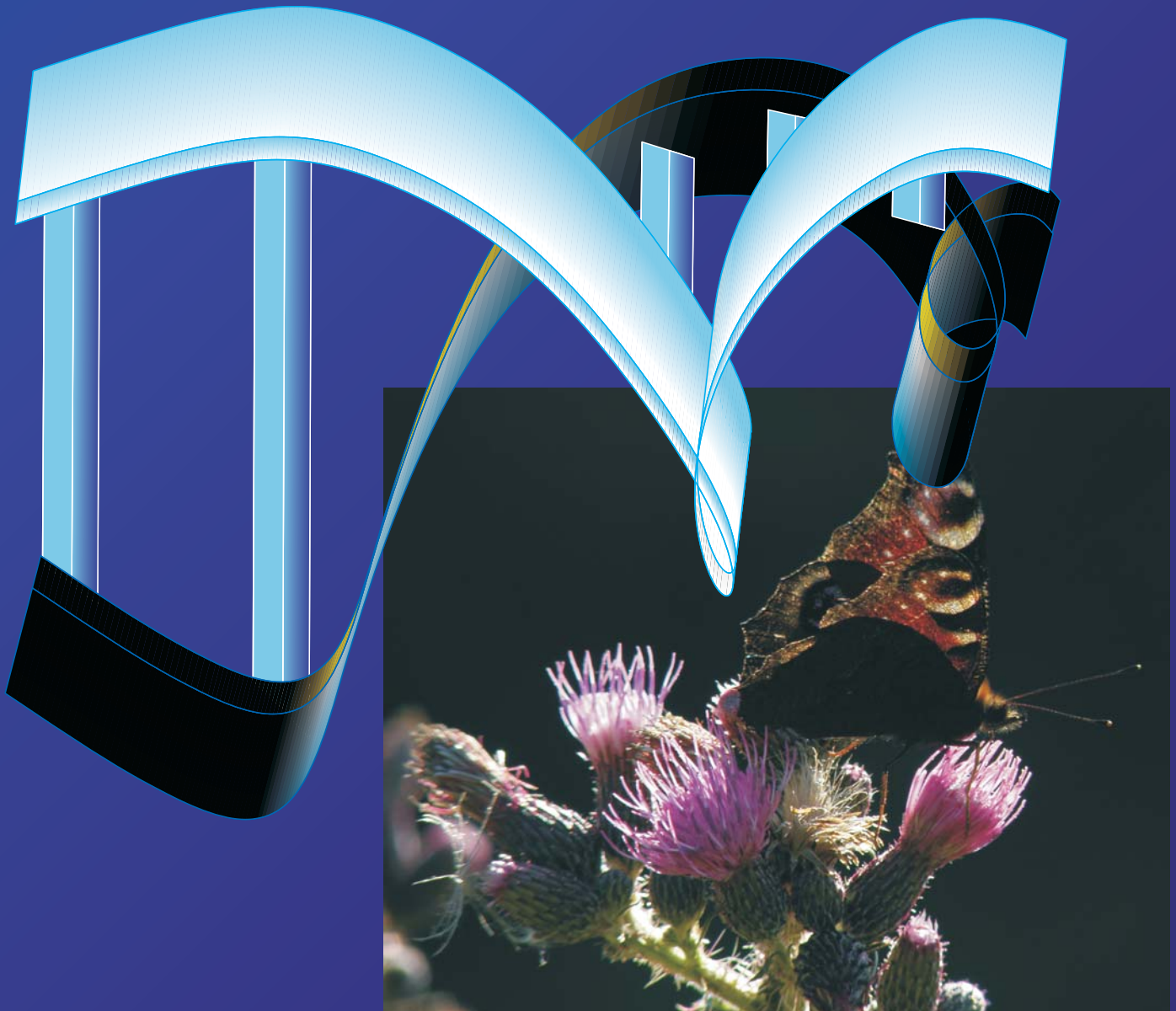


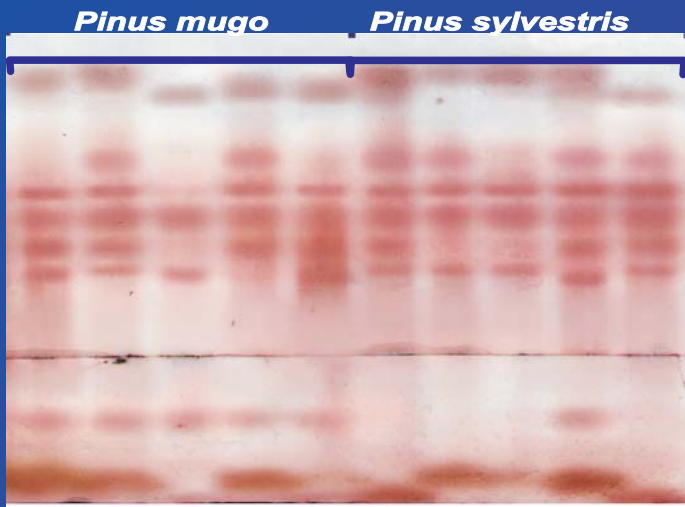


FROM DNA SEQUENCE TO BIOLOGICAL MEANING

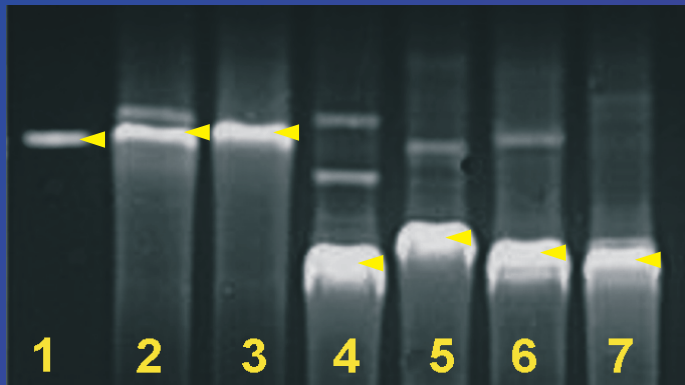
KORNELIA POLLOCK



GRON 2017

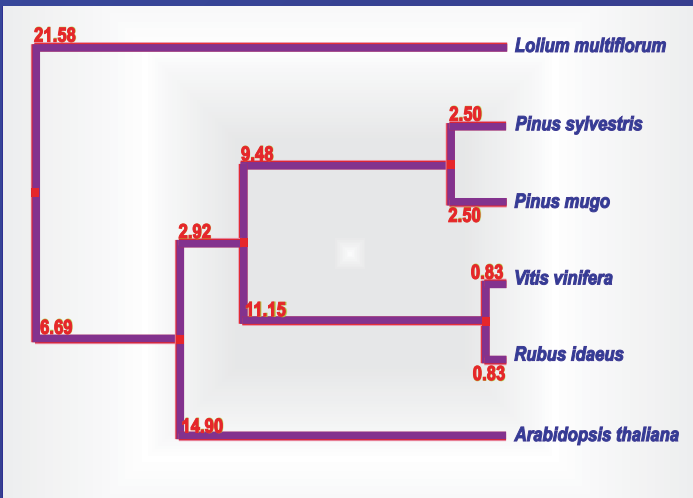


Peroxidases in *Pinus mugo* and *P. sylvestris* as genetic markers (starch gel electrophoresis)

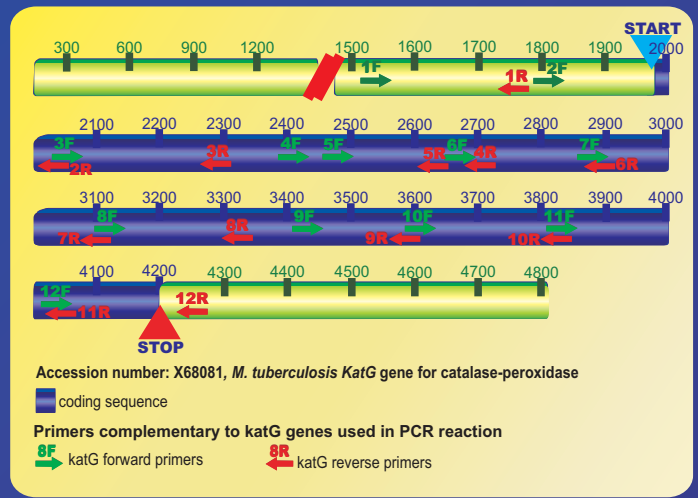


1 - *Pinus sylvestris*, 2 - *Pinus mugo*, 3 - *Arabidopsis thaliana*, 4 - *Rubus idaeus*, 5 - *Vitis vinifera*, 6 - *Medicago sativa*, 7 - *Lolium multiflorum*

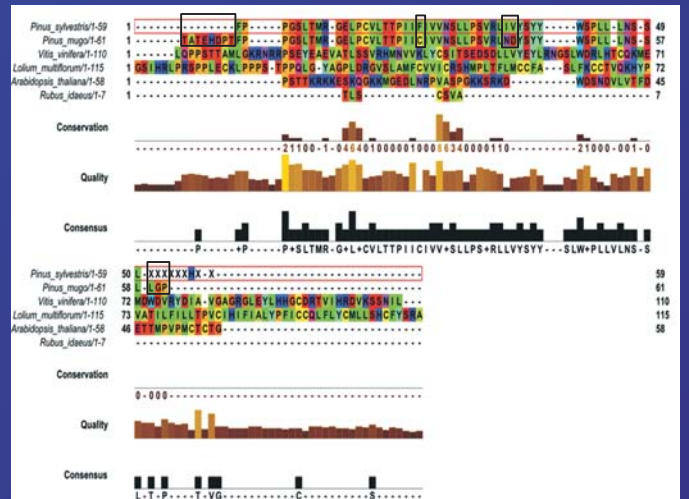
Amplification patterns revealed by *KatG9* primers (arrows indicate sequenced bands)



Phylogenetic tree based on identity of putative amino acid sequences derived from amplification products of the *KatG9* genes



KatG gene from *Mycobacterium tuberculosis* used in studies on molecular evolution of peroxidases



Multiple alignment of amino acid sequences translated from *KatG9* amplification products



3D structure of catalase-peroxidase encoded by *KatG* in *Mycobacterium tuberculosis* based on NCBI searches

